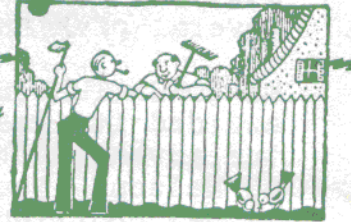




The Garden Spray

BULLETIN OF THE MEN'S GARDEN CLUB OF MINNEAPOLIS

Member--Men's Garden Clubs of America • Minnesota State Horticultural Society



February 1969

Volume 27, No. 2

© 1969, Men's Garden Club of Minneapolis, Minnesota, Wm. H. Hull, Editor
7017 Dublin Road, Edina, Minnesota, 55435. Assistant Editor, Edw Culbert;
Associate Editors: Archie Flack, Harold Kaufmann, Vic Lowrie, Charlie
Proctor and Phil Smith.

Club Officers: President - Nate Siegel Vice President - Phil Smith
Secretary - Ed Culbert Treasurer - Dave Johnson
Director - Roger Anderson Director - Otto Nelson
North Star Region Delegates: Verner Carlson and Dale Durst

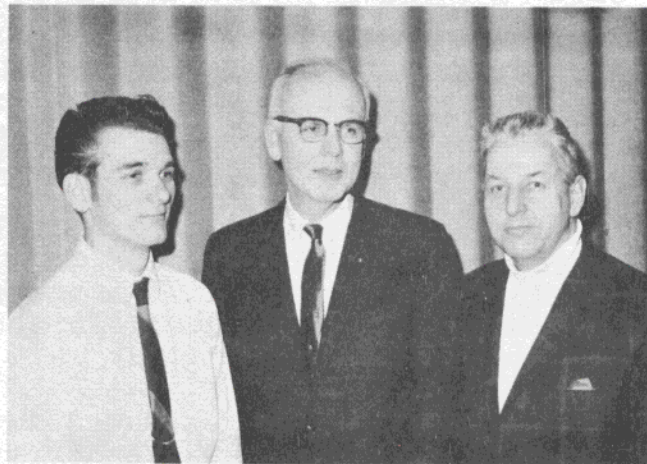
FEBRUARY 11 MEETING

Usual place, time, price: Mount Olivet Lutheran Church, 6 P.M. \$2.00

A most promising speech by Allan Peterson (Ph.D.), Professor of Entomology, Institute of Agriculture, University of Minn., speaking on "Insect Control for the Home Gardener, new materials and practices." Leon Snyder recommends highly, so this should be an excellent and helpful talk.

Also: "Garden Design and Plant Arrangement," by Archie Flack. As usual, Archie will give us many helpful and valuable guidelines.

A SPECIAL RECOGNITION OF THREE MEMBERS



The camera was so fortunate as to catch Don Peterson, Don Jepson and Henry Halvorson together at the January meeting ... three of our newer members. We particularly welcome them, although belatedly, because we know the future of our club depends upon the role they will take in it and because we enjoy

PERSONALLY SPEAKING...

WE CONGRATULATE PHIL SMITH...who was admitted to partnership of his law firm the first of the year. The firm practices only patent, trademark and copyright law and Phil specializes mainly in trademark law. He handles the domestic and foreign trademark problems of several of Minnesota's large corporations. Good going, Phil.

WE CONGRATULATE AL NELSON...The Minnesota Rose Society recently awarded its Past President's Gold Award for unselfish devotion to the advancement of the rose in our state to our friend and member Al Nelson. The citation also read, "In 40 years of rose growing Al has contributed in many ways, but most important was the work he did in developing the Minnesota Tip method of winter cover." Good going, Al. A worthy and well-deserved recognition.

FRITZ HOLZMAN is now at home and recuperating. A card or note would probably be appreciated. CORTIS RICE is said to be back in Sarasota from the South Seas. RENE DUFOURD is home in Mt. Dora, where we all send best wishes. DALE DURST and family are back from Christmas vacation in Florida. BILL COWCILL says he will never call a spade by any other name unless he falls over it in the dark.

WE'RE BULGING THIS MONTH...

...speaking of the issue of THE GARDEN SPRAY, that is. If things seem extremely abbreviated, we believe you'll understand that we did a lot of cutting just to include all we wanted to send you.

THE CLUB'S FINANCES

For several years we have summarized the two pages of budget and expenses; we hope this is satisfactory and will follow that practice again for 1968 and 1969 to reduce space. Both of these entire reports were read at the January meeting.

In 1968 major expenses were for The Garden Spray \$205 (all cents omitted), plus \$20 to come; Christmas party net expense \$105, Programs and Shows \$291, Arboretum donation \$300, Horticultural Society \$198, MGCA \$263, Delegates to MGCA convention \$200, Miscellaneous \$417. Major income item: Dues \$1,041, Interest on savings \$117, Miscellaneous \$543. Exceptions to the above included an expense of \$114 against income of \$170 from Garden Lessons We've Learned, and also a carry-over of \$1,093 of revenue from the convention. Carry-over credits into 1969 include \$893 from convention income and \$56 from Garden Lessons, the latter being assigned for long-range use for photos for Spray. This leaves a "to surplus" figure of \$482 out of which must be paid late arriving bills of \$357, so apparently the net to surplus will be about \$105, which incidentally closely approximates the income from interest mentioned above.

see Feb 68 spray
Oct 68

The 1969 budgeted income is considerably reduced due to reduction in income and expenses are set at: The Garden Spray \$250 (Memberships: Arboretum \$300, Hort Society \$200, MGCA \$265), Christmas party \$100, Programs and shows \$250, Awards and Cheer, \$25 each, Miscellaneous \$200, and Attendance at 1969 MGCA

PRESIDENT'S PAGE

by Nate Siegel

(Nate's special page sent to the editor via Special Delivery simply got lost somewhere in the mail and we are forced to go ahead without it. In that page, Nate listed the 1969 committees, reproduced here.)

1969 Committees

CHEER...Bill Swanson, Chairman. Purpose: to keep in touch with 111 members and to inform us of their progress.

FLOWER SHOW..Charlie Proctor, Chairman. Purpose: to supervise our flower show activities for the year.

THE GARDEN SPRAY..Bill Hull, Editor. Ed Culbert, Asst. Editor; Archie Flack, Harold Kaufmann, Vic Lowrie, Charles Proctor and Phil Smith, Associate Editors. Purpose: to publish our official bulletin monthly.

HOSPITALITY..Dwight Stone, Chairman.

INCORPORATION..Dwight Stone, Chairman. Frank Vixo, Bud Christenson, and Ed Montgomery. Purpose: to proceed with incorporating the club.

MEMBERSHIP..Sherm Pinkham, Chairman. Henry Halvorson, Jim Lowrie, Jim Perrin, and Dale Durst. Purpose: to build the total membership of the club.

NORTH STAR REGION DELEGATES..Verner Carlson and Dale Durst. Alternates are Nate Siegel and Otto Nelson. Purpose: to represent our club in regional planning activities.

PROGRAMS..Phil Smith, Chairman. Archie Flack, Les Johnson, Vinton Bouslough, Jack Peterson.

SPECIAL INTEREST GROUPS..Bob Smith, Chairman. Purpose: to arrange groups of members as sub-units of our club, those groups being interested in the same specialized type of gardening.

TELEPHONE..Cliff Briscoe, Chairman. Paul Burt, Don Jepson, Art Johnson, Sherm Pinkham, Al Nelson, Einar Johnson, Evald Johnson, Don Peterson, and Thurber Day. Purpose: to call all of the members of the club upon any special occasion as authorized by the president.

GERMINATING DELPHINIUM SEEDS & GROWING THE SEEDLINGS

by Al Nelson

About fifteen years ago, I decided to grow some Pacific hybrid delphiniums along a fence row on the edge of my garden, and I wished to do it from seeds. From books and magazines I knew there were problems involved. That was one of the attractions. My border is too narrow to accommodate many delphinium plants, and the lawn too small to expand the border, so most of my planting is in rows in the garden. It is more like farming than gardening, but I enjoy producing good plants. The effects are not nearly as good as a well-planted border, but it is easier to care for and good for picking.

I sent to Vetterle and Reinelt for their catalog, and ordered a number of packs of named varieties of delphinium seeds. When they arrived, I placed them in the refrigerator. About mid-March I planted them in a seedling flat and set them in the sun-porch. I got about 5% germination. For several years I repeated the attempt, varying the method yearly, with the results always being about the same - almost complete failure.

The instructions stated that delphiniums germinated best under cool conditions; I decided to take some liberty with that word "cool". Without refrigerating the seeds, I planted a flat in late March, set it outside and kept it watered. There were snowstorms and freezes after the flat had been set out and I was doubtful of the success probability; but about the first of May the seeds began to come up. It looked like nearly 100% germination.

I suspected that the germination result that year was a lucky accident, but I decided to repeat the experiment the following spring, when I placed a wire netting over the flat to protect it from cats and sparrows, and dusted the area against slugs. Once again, I got almost 100% germination. When the plants were large enough to handle, I planted them into three-inch pots and in two or three more weeks I planted them in the garden. Each year since I have gotten good germination without refrigerating the seeds.

It is after the plants are in the garden that I now have poor results. I have been losing about two thirds of them, some of that loss seemingly due to disease or to a poor root system. To protect against soil-borne disease, last year I started watering the seedlings at intervals with Pano-drench. Some seem to disappear without trace, maybe due to slugs or sparrows. For slugs I have used Snarol, moistened and broadcast in the evenings. In places where birds and pets would not be apt to reach it, I dust with chlordane. Laying boards on the ground collects a limited number of slugs which may also be found under low-growing plants like sweet alyssum. George Luxton's method of trapping them in a container of beer was a failure. My most effective methods has been to go out after a heavy rain and pick them into a can of oil, gasoline or creosote. They move when the soil is wet and are easily found in a cultivated area.

Even with the large losses of seedlings, I get more plants than I can use but they are always welcomed at club plant sales. The plants that survive until fall usually have a third-rate spike of flowers

at that time. I merely check the colors to see if they are true to name and then cut the spikes off. Setting seeds may weaken the plant. In the fall cover them with leaves or hay, and survival the first winter is usually good.

The second year, they are transplanted to their permanent location. There I get good results. During the second winter I have had some losses but I have also had some that survived for several years.

P. W. Young and Phil Smith favor planting the English varieties. They claim that the Pacific hybrids have a tendency to be two-year plants while the English varieties are more persistent. For a number of years, Mr. Young has been giving seeds to anyone in the club wanting them; he recommends refrigeration until they are to be planted. He plants early, and uses lights. His results are very good, as the club members know. Phil gets his seed from Blackmore and Langdon of England and starts the flats about the first of February under lights. He germinates over 80% of the seed and has good plants ready to set out in May. Even the first year plants give good spikes with this method. But the main advantage is that they are less apt to die out after a couple of years. Whether the Pacific hybrids have a tendency to be biennial, or if it is because they have been hybridized in a milder climate and are more subject to winter loss than are the English varieties, is not yet known.

Phil also reports that the English have a slug bait considered better than Snarol. It is called Slugit, available from Murphy Chemical Company, Wheat Hampstead, St. Albans, Hert, England. He also says that the English have developed a dwarf delphinium about half the height of the regular ones. They are also beginning to have named varieties in seeds.

THE COMING SHOW...."PLAN NOW"....SAYS CHARLIE PROCTOR

With the weather we've had inflicted on us the past weeks, it is difficult to work up much enthusiasm for a flower show. Nevertheless, the initial planning is under way. The date will probably be the first or second weekend in August. The location, like last year, the Richfield Public Library. Again, it will be a joint show with the Richfield MGC. A committee is being selected.

Over the years our club has put on some outstanding flower shows. Last year's was a very satisfactory one in some respects, but it fell short in participation and attendance.

Participation: we need assistance in putting on the show and in exhibiting. Committee Chairmen will soon be organizing their groups and I'm sure you will agree to assist in some area. Each one of us should resolve, right now, to make at least one and preferably many entries. Well-filled tables create a beautiful show.

Once the show is completed we hope lots of people will enjoy it. Our publicity committee will explain all angles to advise the public. By far the best, is what you personally tell your friends and co-workers. And let's start thinking right now of the show, even though our gardens are "two feet under".

WHO WANTS TO PARTICIPATE IN A GANG ORDER FOR BIRCH & PINE SEEDLINGS?

Some of us wish to order seedling trees from a famous and reliable Michigan tree grower. Since they are sold only in quantities of 100 or more, we need to share the order. Interested?

Scotch Pine (*Pinus sylvestris* var. *austria*) A fine tree. 8 to 14 inch transplants (not seedlings) will cost us \$34.50 per hundred delivered.

Mugo Pine (*Pinus mugo* var. *pumilio*) The dwarf ornamental. 2 to 4 inch seedlings (only size offered) will cost us \$27.50 per 100.

Canoe or Paper Birch (*Betula Papyrifera*) Leaves turn brilliant yellow in fall. 18 to 24 inch seedlings (largest offered) will cost us \$27.50.

Procedure to participate: send your check for total to Bill Hull. You may order in any units of ten you wish. Be sure to specify what you want. Deadline is February 18. Grower guarantees to replace the transplants and to replace any seedling losses over 40% providing they have been cultivated and planted properly. All will arrive at the Hull address. If insufficient interest, your check will be returned.

SECRETARY ED CULBERT REPORTS FOR 1968

The secretary kept minutes for all regular monthly club meetings and all board meetings during the year. He also kept membership and attendance records and handled authorized correspondence for the club.

Clem Callahan, Harold Dickinson, Richard Hulbert and Charles Nichols were elected to membership during the year. Henry Bachman, Walter Menzel and Walter Quist, charter members, were elected to honorary membership. Death claimed members Neil Barry, Thomas Krumm and Kermit Olson and former active member Al Blackbourn. All were memorialized by Arboretum gifts.

Meeting attendance (members only) ranged from 39 to 56, the median being 48. We had 48 guests at the August garden tour and 67 at the Christmas party, the only meetings open to the ladies.

During the year the club instituted a plan of partially subsidizing the expenses of our delegates to the national convention. Delegates were Nathan Siegel and Sherm Pinkham. Bill Hull also attended. At the convention THE GARDEN SPRAY and Bill Hull, Editor thereof, earned the certificate for the Best Club Bulletin in 1968. All other awards for the year were listed in the January Spray.

At year's end our membership included 6 honorary members, 68 active, 13 associate, 18 professional and 3 non-local Spray-only.

MEN'S GARDEN CLUB OF MINNEAPOLIS -- MEMBERSHIP SURVEY

This is a confidential survey. You need not sign your name. Please fill it in right away and mail it at once to Bill Hull, 7017 Dublin Road, Edina, Minn. 55435. We believe you will understand it is placed here in an attempt to understand you and your wants/needs. Please disregard numbers placed within the survey - they are solely for tabulation purposes.

Please rate the programs over at least a year's time, checking four answers:

- Length of programs: 1)___Too long. 2)___Just right. 3)___Too short.
- Degree of technicality: 4)___Too technical. 5)___About right 6)___Too simple
- Degree of interest: 7)___Dull. 8)___About right. 9)___Interesting.
- Subject variety: 10)___Too few subjects. 11)___About right. 12)___Too many subjects.

What other subjects would you like included? 13) _____

Here are frequently reoccurring subjects. Check those you hope will reoccur annually:

- The latest in annuals _____ 14
- The latest in vegetables _____ 15
- What's New in roses _____ 16
- Fluorescent gardening _____ 17
- Planning the border _____ 18

What can be done to improve or make the programs more interesting to you? 19) _____

What is the basic reason you belong to this club?(20) _____

Is that objective being met? _____ Yes (21) _____ No (22)

If "No", please discuss:(23) _____

Are you contributing your share of effort, ideas,etc., to the club?
_____ Yes (24) _____ No (25)

- If "No" please check one:
- _____ Don't know what I can do. (26)
 - _____ Don't have the time or interest. (27)
 - _____ Feel there is no chance for me. (28)
 - _____ Have never been asked. (29)

If you were president or program chairman, how would you work to get increased membership involvement in club activities? (30) _____

What do you like most about the Men's Garden Club of Minneapolis?(31) _____

What do you like least about it? (32) _____

Can you personally identify 95% of the club members by name? Yes(33). No(34)

Do you believe 95% of them can identify you by name? Yes(35). No(36)

What is your opinion of the dues of this club? Low (37). Okay(38). High(39)

Consider carefully this proposal which The Garden Spray editor is making to the board. Supposing your dues were changed from the present \$10 a year to \$25 a year, payable in advance, but including your meals every month except at the Christmas party. This is a \$7 saving to you - a \$32 value for \$25. We believe this is a safe basis and statistically sound. However, please ignore that element and answer only as it would affect you personally.

Would a \$25 bill due once a year be a severe burden to you? Yes(40) No(41)

Would you leave the club because of this? Yes(42) No(43)

Would it probably bring you to meetings more often? Yes(44) No(45)

Do you believe it would strengthen our club? Yes(46) No(47)

Our membership is declining. We need more members to meet our obligations and to give us a better size group for functions. How can we increase our membership?(48)

What is your age, please? _____years (49)

How many years have you been a member of this club? _____years (50)

Any comments you care to make: _____

Which membership category are you?

- Active
- Associate
- Honorary
- Professional

Please mail right away to :

Bill Hull
7017 Dublin Road
Edina, Minn 55435