

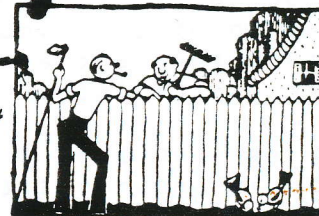


# The Garden Spray

BULLETIN OF THE MEN'S GARDEN CLUB OF MINNEAPOLIS, INC.

*Member--Men's Garden Clubs of America • Minnesota State Horticultural Society*

June 1990, Volume 48, Number 6



## MEN'S GARDEN CLUB OF MINNEAPOLIS

### JUNE TOUR OF MEMBERS' GARDENS

TUESDAY, JUNE 12, 1990

- Time: 5:30 P.M.
- Price: \$8.00 - Includes bus & dinner
- Place: Pershing Park Building  
(one block north of Lake Harriet Methodist)  
4801 Chowen Avenue So.  
Minneapolis, Minnesota  
Members & guests invited  
(permanent reservation list NOT in effect)
- Program: Catered chicken dinner  
Bus leaves at 6:15 P.M.  
Return 9:00 to 9:30 P.M.
- Featuring: Bob Olson's Hostas  
Ted LaBoutillier's Roses  
Henry Halvorson's Peonies & Irises

AND MORE!!!!

\*\*\*\*\*

Please reserve me \_\_\_\_\_ places on the June Garden Tour. My check of \$8.00 X \_\_\_\_\_ places is enclosed.

Please return to Joe Stenger - 5421 Girard Avenue So., Mpls., MN 55419  
by June 8, 1990.

## DRIFT FROM THE SPRAYER

by Ed. Culbert

It's high time while the ground is still wet to pull up those suckers which have sprung up out from the old lilac bush. If you don't, you'll have a thicket. Most likely each sucker will have some fine roots near it's base. Transferred elsewhere the suckers will grow to form new bushes. Given enough of them you can have a hedge. Since we had no money for nursery stock that's the way my father started the lilac hedge around our front yard in Eveleth.

It is also time to prune your lilacs. But don't do it by cutting everything to the ground as the Minneapolis parks department did on Minnehaha Parkway a few years ago. They didn't even wait until after flowering. The following from an Ohio State University extension bulletin on lilacs would have been of help:

### CULTURE

Lilacs are quite hardy in cold climates, but require full sun to flower well. Lilacs are easily grown and apparently do well in both acid or alkaline soil but respond with improved growth to applications of limestone every three or four years where soils are acid.

Pruning and spraying to control pest problems are essential for best growth and flowers. The lilac border can be destructive if not controlled by spraying the stems with Lindane insecticide. The first application is made in late May or early June and repeated at three-week intervals. Oyster shell scale can be a serious problem with all lilacs but can be controlled with an oil spray or ethion and oil dormant spray in the spring. When the scale crawlers appear about mid to late May, spray lilacs with either Sevimol, malathion, Guthion or Trithion. In late summer the leaves may become covered with mildew. This does little harm to the plant. If necessary, it can be reduced with powdered sulfur or spraying with Karathane.

### PRUNING

The best time to prune a lilac is right after it flowers. Pruning consists of removing old flower clusters and thinning out some of the oldest branches at the ground to encourage new growth at the base of the plant. Outward spread of lilac shrubs can be controlled by removal of suckers that grow at the base of the shrub. A certain number of suckers should be left to take the place of the older stems which will eventually be cut out.

Overgrown lilacs can be pruned by a gradual renewal method of pruning. A third of the oldest branches can be cut out close to the ground over a three year or longer period leaving some of the younger stems. By this method, an older lilac can be renewed with young vigorous branches over several years and still retain its natural appearance.

The thinning out method of pruning is recommended for pruning most shrubs. With this method, a branch is cut off at its point of origin or attachment with the parent stem, at a lateral or side branch, or to a "Y" of a branch junction. Shrubs can also be thinned out by cutting out entire stems at the base of the plant. This encourages new branches to sprout up from the base of the shrub.

---

The next time you tackle a new crop of weeds, a shrub in need of a trim, or leaves on the lawn, remember you're doing good things for your body. Both you and your garden will benefit from regular maintenance.



## In Memory of Dar Price

We all lost a good friend, a fellow gardener, a family man and a good Christian when Dar Price succumbed to the dreaded disease, cancer, on April 29, 1990 at the age of 51. Dar loved the outdoors and his vocation as a Land Surveyor coupled with his gardening interests allowed him to spend many hours doing what he enjoyed. Many of you remember Dar as one of the Richfield Men's Garden Club members that elected to join your club in the early '70's. His garden on 15th Avenue South in Richfield was the show piece of the neighborhood and was on many of the club tours. The large, well kept yard, the huge dahlias, and the many fragrant roses are but a few of my memories of his masterfully laid out garden. However, Dar wasn't satisfied with just growing beautiful plants and vegetables. He had to share it with his friends and brought in many new members to the club, including me. His words of encouragement, help when you needed it, and friendly attitude will be sadly missed. He moved to Burnsville, landscaped his entire yard and created another flower and vegetable garden. Roses, cannas, geraniums and dahlias appeared again. All award winners, naturally!

While many of you are familiar with his gardening abilities, I thought you might be interested in some of his other accomplishments. Dar worked as a land surveyor on many major projects in Minneapolis including the IDS Center and the Metrodome. Eight years ago, he and his partners formed the land surveying firm of Peters, Price and Samson. His last major project was the the Minneapolis Convention Center, which is presently nearing completion.

Dar's major love was his family; wife Donna, daughters Jill and Cara, and her husband Scott. Over the years, he encouraged them in sports, music, school, church and provided them with guidance, support and instilled in them his quiet independence and love. Scott and Cara were married last summer, at a big wedding with all the trimmings. Cara continued her senior year at Gustavus with graduation coming this spring. Jill is also at Gustavus finishing her sophomore year and is hoping to enter medical school upon graduation. Dar and his whole family were deeply committed and involved in the activities of House of Prayer Church. He always made the time available when he was needed: ushering, shepherding or with Couples Club. Many of his closest friends were from the church.

I'm really going to miss Dar; the fishing trips we shared, his gentle caring ways, but most of all his friendship. I know all of you feel the same way.

Dick Victor, a friend



## FRAGRANCE GARDEN SUMMER MAINTENANCE SCHEDULE

(Please make a note on your calendar.)

(Sat. to Fri.)

May 20-25	Bob Redmond	822-4109	Jay Reeves	722-4887
May 26-June 1	Dave Moehnke	432-6677	Kent Petterson	332-1821
June 2-8	Tom Hansen	872-9205	Glenn Bartsch	927-5966
June 9-15	Dick Arnevik	561-3944	Stan Skinner	374-5578
June 16-22	Chet Groger	922-6411	Joe Stenger	822-5305
June 23-29	Lloyd Nerburn	935-4642	Duane Reynolds	537-6512
June 30-July 6	Tom Bisch	729-9421	Kevin Olsen	920-2310
July 7-13	Bob Churilla	788-8958	Chuck Carlson	571-0463
July 14-20	Mel Anderson	727-3015	Merle Pulley	822-0172
July 21-27	Burt Deane	933-1903	Larry Bagge	445-2438
July 28-Aug 3	Eldon Hugelen	431-3114	Charles Benson	944-1083
Aug 4-10	Phil Peterson	869-3730	Ed Culbert	823-7853
Aug 11-17	Carleton Nelson	831-8764	Herb Neby	537-7437
Aug 18-24	Greg Smith	591-5996	Duane Johnson	824-0295
Aug 25-31	John Groos	823-8620	John Moon	861-5745
Sept 1-7	Lloyd Wittstock	623-7735	Ray Weisberg	377-2780
Sept 8-14	Lee Gilligan	536-9858	Don Nybo	537-7676
Sept 15-21	Ger Rothen	789-4873	Reed Sonstegard	866-3425
Sept 22-28	Howard Berg	545-7290	Leo Grebner	881-8187

### SPECIFIC INSTRUCTIONS

Please mark your calendars with your scheduled week of work. It is very important that each week's gardening be completed so those that follow are not burdened with extra work. If you can't keep your commitment, please contact someone from the alternate list to take your place or call Kent Petterson if you are unable to arrange a sub.

Hoses for watering are available at the garden. You will need to bring the usual tools such as hoe, hand trowel, trimmer, plastic trash bag, sprinkler, etc. Mowing, once again, will be handled by MSB.

The following should be a minimum list of maintenance each week. 1) Weeding, 2) Watering - the boulevard too, 3) Dead heading, 4) General clean up and debris removal - check outside of the fence.

If you have any questions, please call Kent Petterson (332-1831).

### THE MGCM BOARD AT IT'S MAY MEETING LEARNED THAT:

- The Fragrance Garden clean up day went well. Eldon Hugelen is drawing up a map for the May 19th planting day.
- The annual Flower and Vegetable Show will coincide with the Hort Society annual conference. They will set the categories and rules although we will also give our own awards. There will also be some sort of club vs club competition.
- Kent is considering setting up a working committee to plan for MGCM's 50th anniversary on October 1, 1992.

BUTTERFLIES They're building glass houses to display living butterflies flying about (Marine World Butterfly World, Day Center Callaway Gardens, Cincinnati Zoo). How many different butterflies can you find in your garden? Tell the SPRAY and we'll report it. Butterflies like black-eyed Susan (rudbeckia), cosmos, impatiens, marigolds, milkweed (asclepia), purple cone-flower (echinacea), sunflowers, zinnia. Butterfly-bush (buddleia) which may winter kill and lantana (over-winter inside) also attract butterflies.



## VIEWS FROM THE VEGETABLE GARDEN

MGCM PRESIDENT KENT PETTERSON



---

June 5 - Board Meeting @ Gilligan's  
June 12 - MGCM Tour Meeting  
June 16 - MSHS Benefit Garden Tour  
June 16-19 MGCM National Convention 944-1083  
July 13-15 MSHS Educational Conference 624-7752  
July 14 - MGCM/MSHS Flower Show  
July 15 - MSHS Ed. Conf. Garden Tours  
July 18-22 National Hosta Convention in the  
Twin Cities 920-8327

---

## VEGETABLES FOREVER

A Big Thank You to Dave Johnson, Bob Stepan, The Auctioneers, and the entire committee for a very enjoyable Auction on May 8th. The weather cooperated, the food was good, and a fine selection of plants were available for all buyers.

As you read this, a number of us will be in Hackensack for our tour of Northern Minnesota Wild-flower Gardens. Our host for this tour, Doug Smith, has offered his garden for the tour along with other local gardens. Our Volunteer of the Month for May is Doug, for without his interest this tour would not have happened. We'll give you a complete report on the tour in June.

New members who join MGCM from now until June 15th, can be enrolled for \$27.00 covering the balance of 1990. Let's keep up the member promotion through the summer, especially at the MSHS annual conference.

Our National Convention, as you know, is June 16-19 in Des Moines. If you are planning on attending, please be sure to notify Chuck Benson. Bill Hull and Russ Smith have delegate votes as national officers. In addition the club has ten delegate positions to be filled. If you wish a voice in the future of MGCA, this will be an excellent chance to participate. The disaffection reported in the Southwest Region in last months Spray may not be uncommon and new directions may be in store for MGCA. Your participation is important and we'll see you in Des Moines.

I'd like to extend a big thank you to all the guys who stuck it out through the rain of April 28th for the Fragrance Garden cleanup. Those helping out were Howard Berg, Hans Dekker, Eldon Hugelin, Phil Peterson, Bob Redmond, Ger Rothen, Greg Smith, Reed Sonstegard and Kent Petterson. Planting day was May 19th. Elsewhere in the Spray you will find the summer maintenance schedule. My thanks to Reed Sonstegard for his work in putting the schedule together.

For those of you who were lucky enough to be able to attend the April 7th Seminars put on by the 5th District of MSHS, another excellent set of seminars and events is planned for You in July. For those of you who were not able to attend, you might want to attend some if not all of the great events available at the Minnesota State Horticultural Society's Annual Conference to be held in Eden Prarie July 13-15. In addition our Flower and Vegetable Show will be held in conjunction with the Annual Conference Show. The Show will be held at Eden Prarie Mall on Saturday July 14th. Two time periods will be available for set up of your designs or specimens. Friday 8-10 PM and Saturday 7-10 AM at your convenience. Let's turn out and show the lady's of the Minnetonka Garden Club and the Federated Garden Clubs of 5th district that the Men and Women of MGCM can grow nice specimens too. An added aspect of interest to the show will be a new award for which we will compete. It may be named after a former member of the club. Even is you only wish to show one or two specimens, come on out. Some one will help you to set it up.

Good Gardening to You,

REMEMBER TWENTY FIVE NEW MEMBERS FOR 1990

*Kent*



NOTICE

The 1990 Mens Garden Club Flower and Vegetable Show will be held at the Eden Prairie Center in Eden Prairie. The show will be held in conjunction with the MSHS educational conference which will be held at the Eden Prairie Vocational Technical School.

The show will be held in the central court area of the Eden Prairie Center. (Follow the signs)

Entries will be accepted Friday, July 13 from 8 pm - 10 pm and Saturday, July 14, until 10 am.

Judging will be a 10 am, July 14, and the show will close at 5 pm on Sunday, July 15, 1990.

Our clubs standard awards will be given out.

Albert R, Blackburn Trophy - Flower Sweepstake  
Tom Foley Trophy - Vegetable Sweepstake  
Robert L. Smith - Best Showing by 1st time exhibitor  
1990 National Vegetable - BEAN  
1990 National Flower - MARIGOLD

Sweepstakes points will be awarded as follows in both horticulture and artistic design.

3 points	1st place
2 points	2nd place
1 point	3rd place

Additional ribbons will be awarded in the sweepstakes category for those exhibitors who finish in second and third place.

Because the show is a MSHS and Fifth District event, we, as members of the society and district will also compete for additional awards such as:

Best in Show - Design, Flower, Vegetable  
Reserve Champion - Design, Flower, Vegetable  
Special awards for horticultural excellence.

The Fifth District will also award a trophy to the fifth district garden club which has the largest number of members entering the show. An exhibitor must enter his or her own material to count toward the Fifth District Garden Club Trophy. You can't have a friend do it for you.

The show schedule will be sent in July along with info on the conference.

\* \* \* \* \*

BIGGER ONIONS - For bigger onions, brush away the soil around the bulb so roughly 2/3 of the bulb is above the ground and exposed to the sun. Carrots need the opposite approach. Brush soil over the crown as it begins to push above the soil. Otherwise, tops will green up and become woody.

---

Copy for the July SPRAY must reach the editor by Tuesday June 12. The early deadline is because of the national convention.



THE YEAR IN REVIEW  
(Pictures by Dr. Bob Olson)

INDUCTION OF NEW MEMBERS

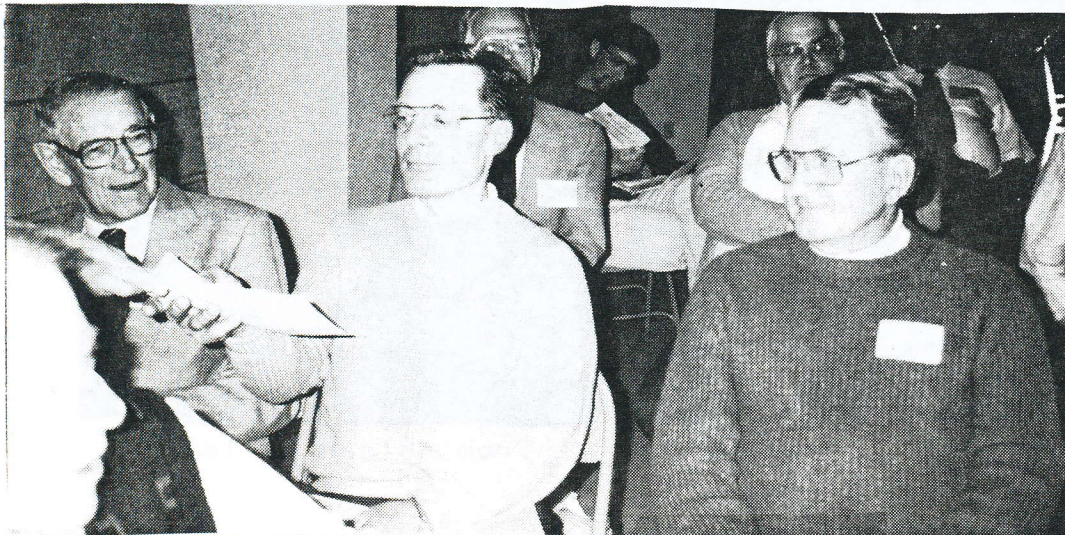
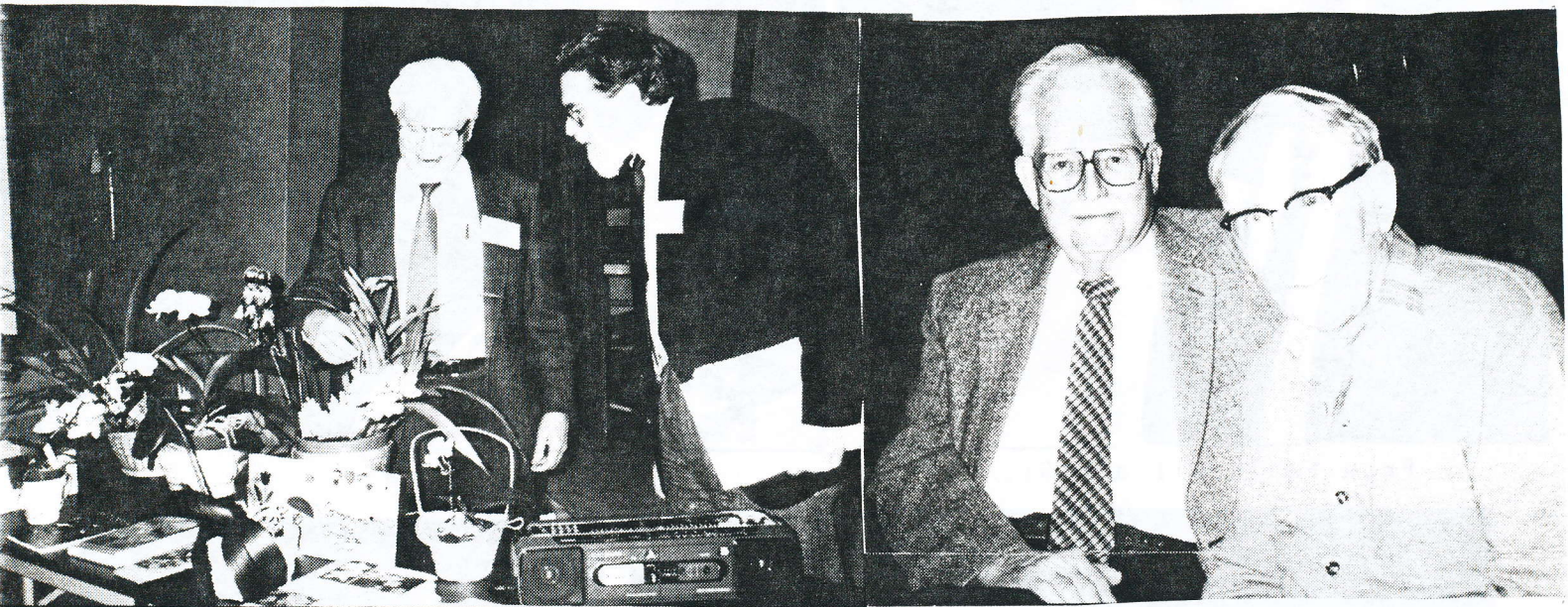


Skinner

Reed

Arnevik

THE FEBRUARY MEETING





THEY CAME FROM EVERYWHERE  
(To the March Dayton-Bachman Meeting)



From Minneapolis and Brooklyn Center



From Wayzata



From Faribault and St. Paul



From Edina



Even by families



From Golden Valley



## THE LIVING "OLD TIMERS"

When I was forty-five I was presented an Old Timers pin in a Masonic lodge and quickly put it away. At that age no one wants to be branded an old timer. I've never worn the lovely pin.

Occasionally someone says "Bill, as the MGCM's historian I assume you have the greatest longevity." Wrong. I'm sixth.

That member having the most stars in his crown (Reads: years of membership) is editor Ed Culbert, who joined the club in 1945 when it was just three years old. Just one year later Larry Corbett joined, followed in 1949 by Bob Savory and in 1950 by Larry and Lloyd Bachman. (For many years those men were all considered "Professional Members". That was a separate category into which some were slotted for special erudite purposes - that category later being abolished.

Then I came along in 1952, the tenth year of our club's history, having been chartered by the Men's Garden Clubs of America in 1942 and entitled to use the words "Men's Garden Club." Most of our founders were still around and I knew them well.

In 1956 we were lucky enough to add Charley Proctor to our list and in 1957 Jerry Olson and Frank Vixo. In 1958 we luckily obtained Floyd Ashley, Roger Koopmans and Dwight Stone. Then Bob Smith in 1959.

As we approached our twentieth anniversary we accepted Bud Christenson and Nate Siegel in 1961 and Phil Smith in 1962.

Of course there were a lot of other men who came and went, but these sixteen men are the remains of our first twenty years. Aren't we lucky?

What's more, these men have not just put in the years. They've worked hard to keep our club functioning and to make it a service club to our community. We "older" (Lord, how I hate that word!) members, encourage you younger members, to grab the baton and carry our club into the future. Don't forget, we'll be 50 years old in 1992.)

Bill Hull, Historian

### WE WELCOME NEW MEMBER

Anne E. Quiggle                      379-1116  
1031 15th Ave. SE  
Minneapolis, MN 55414

### **GARDEN TOPICS**

**Grass - The green stuff that wilts in the yard and flourishes in the garden.**

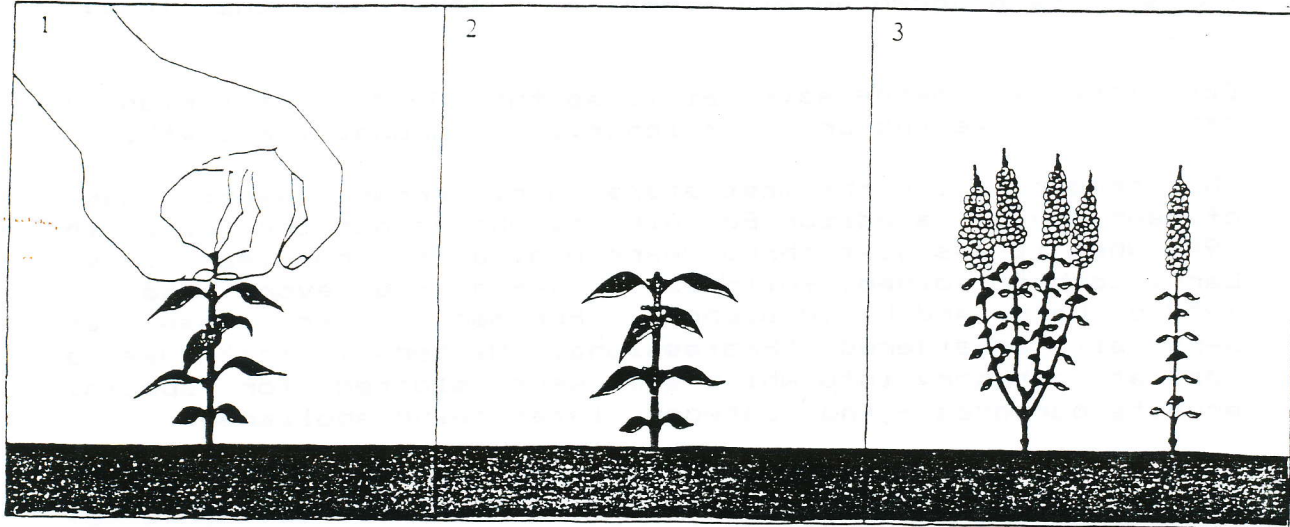
**Marigolds were first regarded with distrust on account of their odor. Some herbalists considered them poisonous.**

\*\*\*\*\*

# Every Member Sponsors A New Member

\*\*\*\*\*

## MULTIPLYING BLOSSOMS BY PINCHING BACK



To increase the number of flowers a plant bears, pinch off the tip of the stem above the topmost leaves. This "pinching back" is done when a young plant is 2 to 4 inches tall and has three or four sets of leaves.

Pinching back the plant causes the little buds at the leaf base along the stem to begin developing into branches of their own; their growth is stimulated by energy that would otherwise have gone to the tip.

A plant whose tip has been pinched off (above, left) will be bushier and produce a number of flowering branches; an unpinched plant (above, right) will produce fewer flowers and may grow only one stem.

Return to  
 THE GARDEN SPRAY of MGCM, Inc.  
 Edwin C. Culbert, Editor  
 5315 Portland Avenue  
 Minneapolis, Minnesota 55417  
 \*\*\*\*\*

**MEN'S GARDEN CLUB OF MINNEAPOLIS, INC.**  
 CLUB OFFICERS:

President: Kent R. Petterson  
 908 E. River Ter., Minneapolis 55414  
Vice-President: Merle T. Pulley  
 3852 Pleasant Ave. S., Minneapolis 55409  
Secretary: Reed Sonstegard  
 6336 Logan Ave. S., Richfield 55423  
Treasurer: Joseph L. Stenger  
 5421 Girard Ave. S., Minneapolis 55419  
Past-President: Duane A. Johnson  
 1226 W. 53rd St., Minneapolis 55419

**DIRECTORS:**

Melvin C. Anderson  
 5701 35th Ave. S., Minneapolis 55417  
 Charles S. Benson  
 5808 W. 78th St., Edina 55435  
 Lee Gilligan  
 6506 W. Broadway, Brooklyn Park 55428  
 Gregory Smith  
 1520 Rhode Island Av. N., Golden Valley 55416

# FIRST CLASS